

7346 Brook Forest Drive, Evergreen Colorado 80439  
Sales@AlphaPixel.com www.AlphaPixel.com

*For Immediate Release September 28, 2005*

*Contact Mindy Hanson for more details or images.*

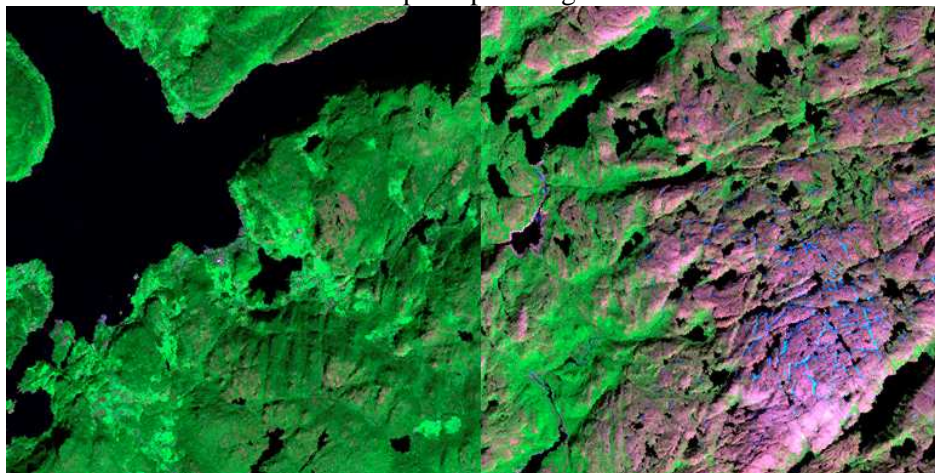
### **AlphaPixel Releases PixelSense 742 v1.0**

(Evergreen, CO) AlphaPixel, LLC has released version 1.0 of their third product, PixelSense 742. PixelSense 742 is a quick and easy tool for processing Landsat 742 band combination remote-sensed imagery into natural-color georeferenced GeoTIFF images, ready-to-use in any mainstream GIS or visualization software. At only \$199 (USD), PixelSense 742 opens the door to access the vast quantities of commonly-available high-resolution Landsat image mosaics (GeoCover, etc) available online today that were previously unusable due to their unconventional color balance.

PixelSense 742 offers multi-file batch processing via command-line or user-interface, instantly processing large amounts of Landsat 7/4/2 band imagery.

AlphaPixel leverages the strengths of the Internet to deliver streamlined and cost-effective sales, service and support. AlphaPixel products can be purchased 24 hours a day online at [www.AlphaPixel.com](http://www.AlphaPixel.com).

Sample Input Images



Sample Output Images



(<http://www.alphapixel.com/images/products/pixelsense742/742Sm.jpg> )  
(<http://www.alphapixel.com/images/products/pixelsense742/742NatSm.jpg> )