

7346 Brook Forest Drive, Evergreen Colorado 80439
Sales@AlphaPixel.com www.AlphaPixel.com

For Immediate Release September 28, 2005

Contact Mindy Hanson for more details or images.

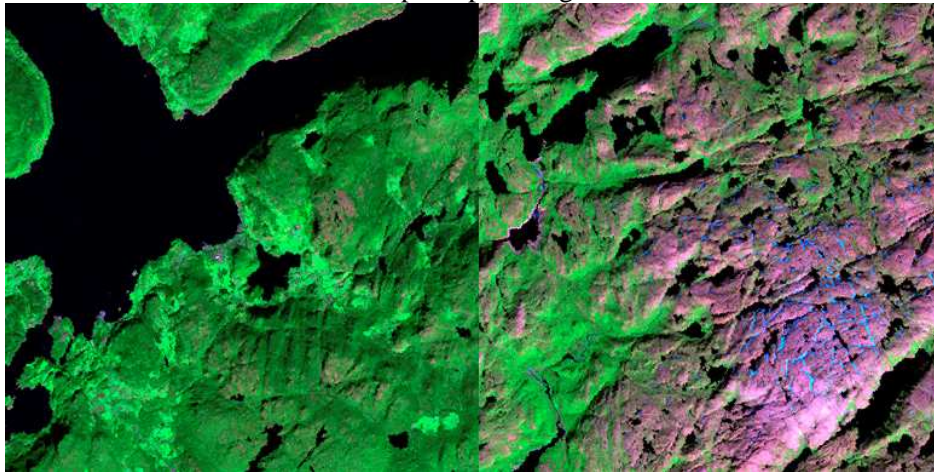
AlphaPixel Releases PixelSense 742 v1.0

(Evergreen, CO) AlphaPixel, LLC has released version 1.0 of their third product, PixelSense 742. PixelSense 742 is a quick and easy tool for processing Landsat 742 band combination remote-sensed imagery into natural-color georeferenced GeoTIFF images, ready-to-use geospecific textures in mainstream visualization software, database creation tools and image generators. At only \$199 (USD), PixelSense 742 opens the door to access the vast quantities of commonly-available high-resolution Landsat image mosaics (GeoCover, etc) available online today that were previously unusable due to their unconventional color balance.

PixelSense 742 offers multi-file batch processing via command-line or user-interface, instantly processing large amounts of Landsat 7/4/2 band imagery.

AlphaPixel leverages the strengths of the Internet to deliver streamlined and cost-effective sales, service and support. AlphaPixel products can be purchased 24 hours a day online at www.AlphaPixel.com.

Sample Input Images



Sample Output Images



(<http://www.alphapixel.com/images/products/pixelsense742/742Sm.jpg>)
(<http://www.alphapixel.com/images/products/pixelsense742/742NatSm.jpg>)